

PRODUCT OVERVIEW

DOUBLE-TAKE® FOR WINDOWS®

When recoverability matters, depend on Double-Take® for disaster recovery, high availability and centralized backup.

Sure, you back up your data. But how frequently? How much data would you lose in a disaster? How long would you be without access to critical applications and data? Double-Take® for Windows from Double-Take® Software goes beyond periodic backup to provide affordable data protection, ensure minimal data loss, and enable immediate recovery from any system outage. Double-Take continuously captures byte-level changes as they happen and replicates those changes to one or more alternate servers at any location, locally or globally.

Don't sacrifice performance for protection.

By replicating only the bytes that change, Double-Take uses the minimum bandwidth required. Plus, features like Flexible Bandwidth Scheduling and Intelligent Compression allow you to control how much bandwidth Double-Take can consume at different times.

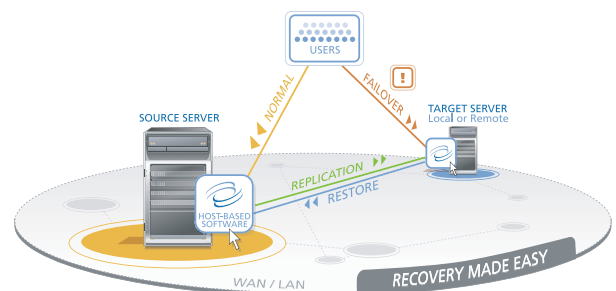
Hassle-free Full-Server Failover ensures availability of any application.

The Double-Take Full-Server Failover feature provides easy full-server protection and failover. The Full-Server Failover Manager allows IT administrators to easily setup, monitor, and failover entire production workloads between servers (including virtual machines) regardless of their hardware differences. And since Full-Server Failover protects the entire system including the OS, applications and data, there's no need to separately manage service packs, application updates or hotfixes on the standby server, further reducing the complexity of maintaining application uptime.

Recover entire servers on demand with the Server Recovery Option.

Double-Take, when combined with the Double-Take Server Recovery Option, provides a single solution to continuously protect and recover an entire server, including the OS, applications and data. Using the Double-Take Server Recovery Option, multiple servers can be replicated to a single image server and recovered on-demand to new hardware after a disaster.

How Double-Take Works



Choose the proven leader.

Double-Take Software (Nasdaq: DBTK) is a leading provider of affordable software for recoverability, including continuous data replication, application availability and system state protection. Double-Take Software products and services enable customers to protect and recover business-critical data and applications in both physical and virtual environments. For more information: www.doubletake.com.



Double-Take: Proven data protection that fits your infrastructure and your budget.

Defend Your Data

Continuous, asynchronous, byte-level replication over any distance.

Double-Take monitors changes to all protected files and replicates only the bytes that change. Replicate to a disaster recovery site as far away as you would like, over standard IP networks, for maximum protection against data loss. Improve performance by compressing protected data before it is sent.

High availability and failover. Choose between either application-level or full-server failover to configure an alternate system to take over for your production server in the event of an outage.

Point-in-Time Recovery. Double-Take integrates with Microsoft Volume Shadow Copy Service to allow you to schedule and recover from up to 64 point-in-time copies of data on your Double-Take target.

Supports Clustered Deployments. Protect up to eight nodes in a single cluster; replicate to or from MSCS clusters of up to eight nodes, and automatically respond as cluster resources move from node to node.

Centralized Reporting and Analysis. The Double-Take Reporting Center feature offers detailed, custom analysis and reports of your entire Double-Take environment. The rich reporting and dashboard views of the Double-Take Reporting Center make it easy to manage even the largest Double-Take deployments.

Protects Exchange, SQL Server, Virtual Systems, SharePoint, and more. Bulletproof your business continuity, data migration, centralized backup, and server consolidation operations.

Four Clicks From Fortified

The Double-Take Application Manager Feature.

The Double-Take Application Manager (DTAM) feature is designed specifically for the configuration and management of protection for Microsoft Exchange, SQL Server, SharePoint Services and Windows File Services. It automates the setup and configuration of real-time protection and availability management for these business-critical applications.



Server Auto-Discovery – Auto-discovery of servers allows you to configure replication and failover from the user interface with ease.

Auto-Selection of Protected Data – For each application being protected, DTAM automatically discovers data to be replicated.

Integrated Recovery and Failback – To ease recovery procedures and reduce downtime, DTAM provides integrated restore and failback capabilities to automatically recover data to the original production server and initiate failback.

Pre-Flight Check – DTAM includes many points of validation to reduce or eliminate the potential for errors.

Downtime is your enemy. Choose your weapon.

Continuous, full-server protection using Double-Take. There's more to protecting your systems than just protecting the data. Double-Take is the world's most relied-upon solution for affordable data protection, disaster recovery and centralized backup. Full-server protection uses Double-Take replication to protect the OS, applications and data for easy recovery.

Dissimilar Hardware Support. The unique system state replication and restoration capabilities of Double-Take and the Double-Take Server Recovery Option can account for a variety of differences between the original production server and the recovery system. It can be used to recover any configuration of physical servers and can even be used with virtualized servers for cost-effective disaster recovery.

Snapshot Support. Double-Take system state protection integrates with the Microsoft Volume Shadow Copy Service to allow you to schedule and recover from up to 512 point-in-time copies of protected systems.

WAN Support. By choosing whether or not to persist the networking settings of the production system, it is possible to provide full-server failover or recovery across WAN connections to dedicated disaster recovery sites.

Broad Application Support. Double-Take Software's system state protection replicates the entire server so there is no need for specialized application support.

• Double-Take Full-Server Failover Feature

The Double-Take Full-Server Failover feature provides full server protection and failover. It compliments the system state protection and on-demand recovery of the Double-Take Server Recovery Option by providing hardware-independent system state protection with monitoring and failover for your most critical systems.

Full-Server Failover Manager. IT administrators can easily setup, monitor and failover production systems in their entirety. And since the Full-Server Failover Option is protecting the system state of the production system, there's no need to separately manage service packs, application updates or hotfixes on the standby server.

Failover Monitoring. The standby system continuously monitors the production system's availability and, if needed, initiates the failover process with or without user intervention.

• Double-Take Server Recovery Option

Double-Take, when combined with the Double-Take Server Recovery Option (SRO), provides a single solution to continuously protect and recover an entire server. Because Double-Take and the Server Recovery Option protect the entire production server – its operating system, applications and data – restoring the server takes as few steps as possible and provides a significantly easier recovery than tape backup.

Simple Implementation and Management. The Double-Take Server Recovery Option features additions to the Double-Take Management Console that provides a wizard for creating a connection that protects the entire server.

Get Back Up And Running with Recovery Manager. The Recovery Manager application, included with the Double-Take Server Recovery Option, allows you to quickly and easily configure and perform recovery, including validation steps that ensure recovery goes as planned.



Get the standard today: www.doubletake.com or 888-674-9495